

12H

Celebrating 10 years of Happy Haus innovation

12H Design • 2T Facade

Double Storey

From \$551,900



4 2.5 2

347.2 sqm



A Happy Haus is beautiful yet practical. It is a home that engages with its surrounds, and maximises the ability to enjoy the benefits of life in the subtropics. While on the inside, it is complete with stunning interior design and carefully considered luxury standard inclusions.

Happy Haus

happyhaus.com.au

(mm)

1	Kitchen	5000 x 4100
2	Living	4800 x 3300
3	Dining	3300 x 3200
4	Outdoor	8750 x 3500
5	Family	4900 x 3200
6	Rumpus	4900 x 4050
7	Master	4450 x 4000
8	Ensuite	5500 x 2850
9	Bedroom 2	3450 x 3400
10	Bedroom 3	3450 x 3300
11	Bedroom 4	3450 x 3300
12	Bathroom	3800 x 3350
13	Laundry	2500 x 2300
14	Pantry	3400 x 1500
15	Walk-in	3350 x 2100
16	Balcony	8400 x 900

Block 12.5m wide block

Minimum width x depth 12.5 x 32m

Dimensions 10.6 x 20.9m

Ground 110.6m²

First 157.5m²

Outdoor 30.7m²

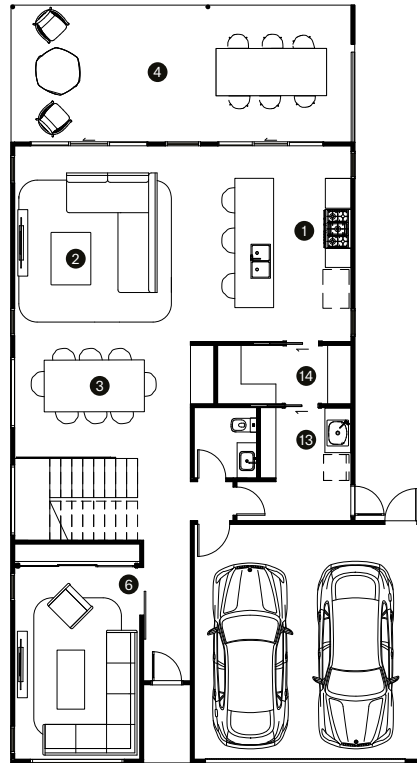
Porch 2.4m²

Balcony 8.8m²

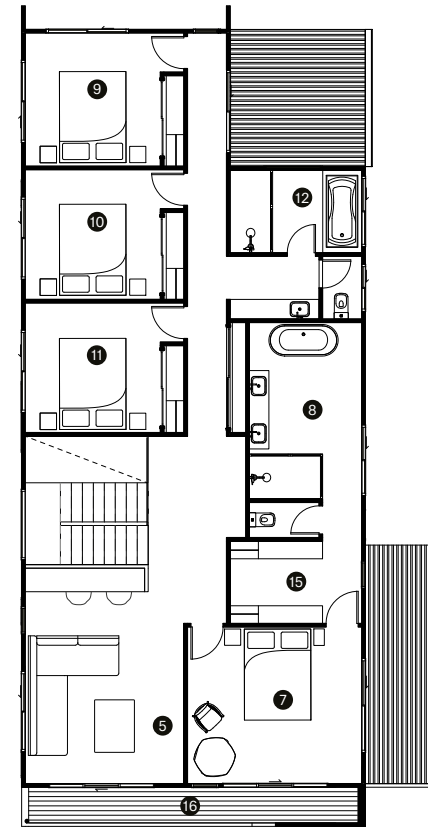
Garage 37.2m²

Total 347.2m²

Ground



First



Contact our helpful team to discover more about the difference in our homes and customer experience.

Contact Happy Haus