

12F

Celebrating 10 years of Happy Haus innovation

12F Design • 2N Facade

Double Storey

From \$512,900

🏠 🏡 🏠

4 2.5 2

321.7 sqm

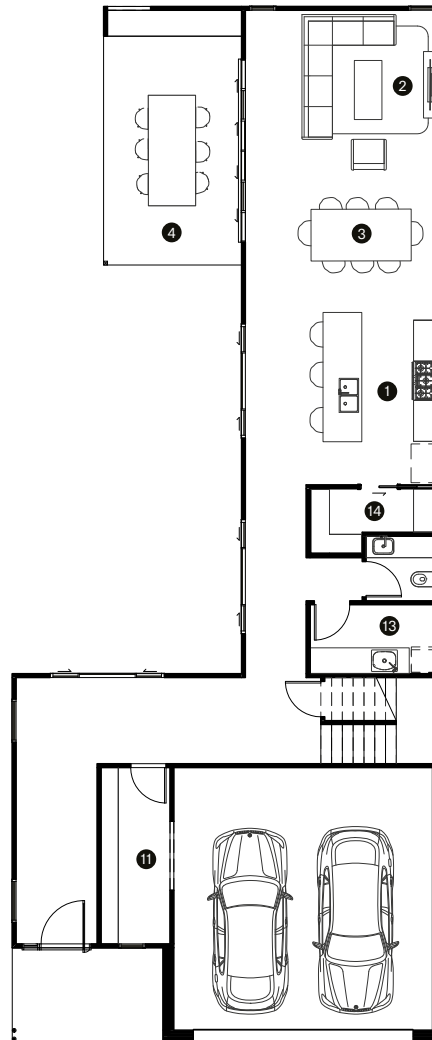


A Happy Haus is beautiful yet practical. It is a home that engages with its surrounds, and maximises the ability to enjoy the benefits of life in the subtropics. While on the inside, it is complete with stunning interior design and carefully considered luxury standard inclusions.

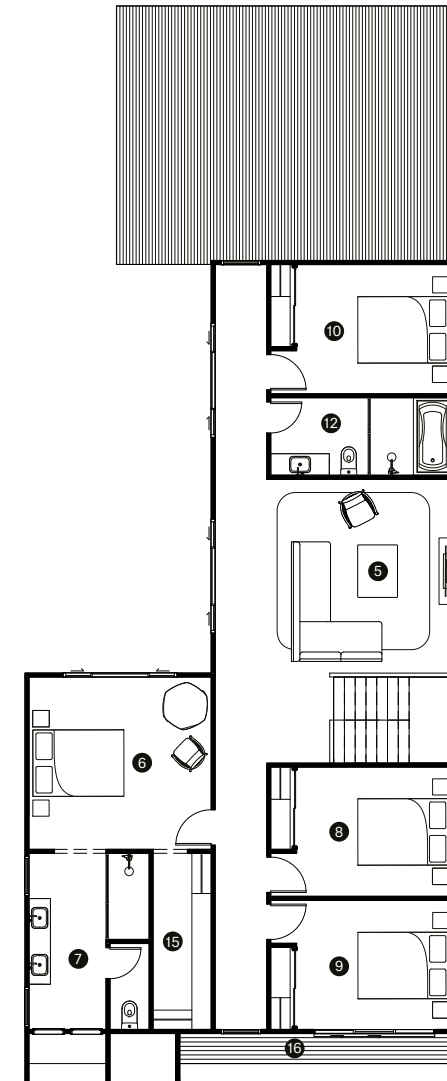
Happy Haus

	(mm)
1 Kitchen	4000 x 3800
2 Living	4500 x 4000
3 Dining	4500 x 3200
4 Outdoor	5900 x 3100
5 Family	4500 x 4300
6 Master	4250 x 4000
7 Ensuite	4100 x 2800
8 Bedroom 2	3600 x 3000
9 Bedroom 3	3600 x 3000
10 Bedroom 4	3600 x 3000
11 Mudroom	4100 x 1600
12 Bathroom	4200 x 1800
13 Laundry	3000 x 1600
14 Pantry	3000 x 1500
15 Walk-in	4100 x 1350
16 Balcony	6300 x 1150
Block	12m wide block
Minimum width x depth	12.5 x 34m
Dimensions	10.0 x 25.0m
Ground	109.0m ²
First	138.0m ²
Outdoor	19.2m ²
Porch	7.6m ²
Garage	41.1m ²
Total	321.7m ²

Ground



First



Contact our helpful team to discover more about the difference in our homes and customer experience.

[Contact Happy Haus](#)