

12D

Celebrating 10 years of Happy Haus innovation

12D Design • 1D Facade

Single Storey

From \$346,275



4 2 2

238.5 sqm



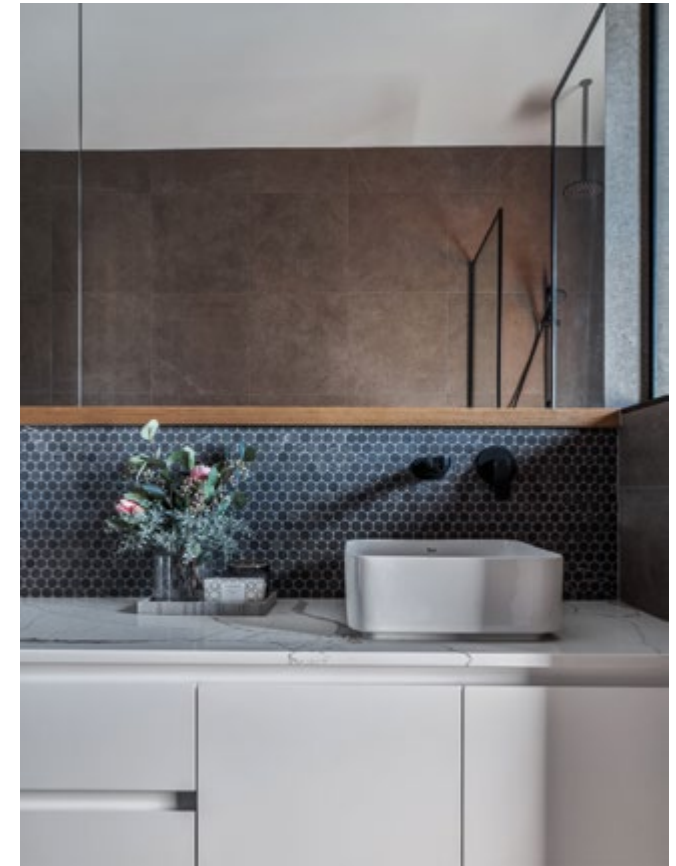
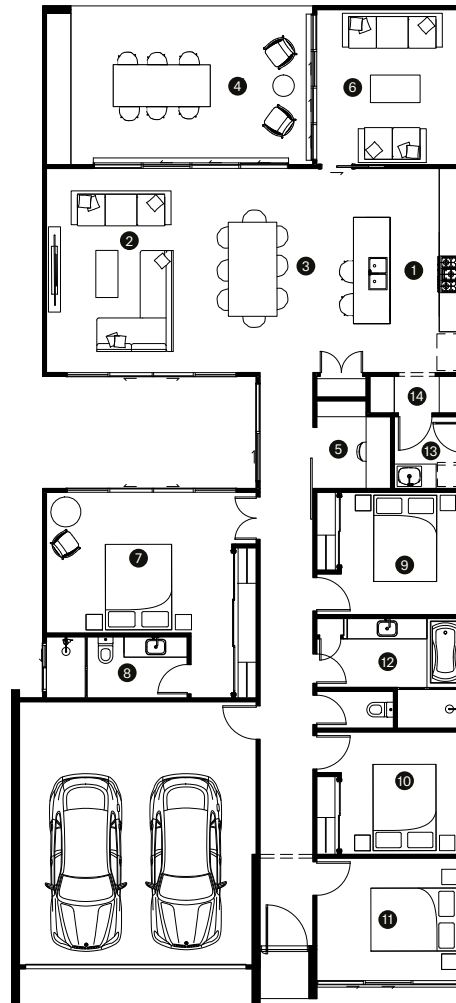
Suited to a 14m block with different zones in one eye-line off a communal hub with kitchen, dining and living. 12D is designed to naturally cross-ventilate and benefit from ample natural light. An interconnected kitchen, walk-in pantry laundry maximises the work zone functionality and the main bathroom is family-friendly for simultaneous use.

Happy Haus

12D

(mm)

1	Kitchen	5000 x 3700
2	Living	5000 x 3400
3	Dining	5000 x 3150
4	Outdoor	6550 x 3900
5	Study	2150 x 1800
6	Family	3800 x 3600
7	Master	4550 x 3450
8	Ensuite	3450 x 1500
9	Bedroom 2	3000 x 3000
10	Bedroom 3	3000 x 3000
11	Guest	3500 x 3000
12	Bathroom	3600 x 2700
13	Laundry	1750 x 1700
14	Pantry	2300 x 900
Block		12m wide block
Minimum width x depth		12.5 x 32m
Dimensions		11.2 x 24.5m
Ground		170.6m ²
Outdoor		25.8m ²
Porch		1.4m ²
Garage		40.7m ²
Total		238.5m ²



Our collection is designed to suit block widths of 10m, 12m and 14m. Each design is named accordingly.

Contact our helpful team to discover more about the difference in our homes and customer experience.

[Contact Happy Haus](#)

Happy Haus does not give any warranty or make representations, expressed or implied, about the completeness or accuracy of any information in this document or provided in connection with it. This document is not binding on Happy Haus and is not intended to be relied upon. All persons should make their own independent enquiries as to the matters referred to in this document. Ratio Living expressly disclaims any and all liability relating to, or resulting from, the use of, or reliance on, any information contained in this document by any persons. Happy Haus by RM Housing Group QBCC License 1260641. © 2019 Happy Haus