

12C

Celebrating 10 years of Happy Haus innovation

12C Design • 1C Facade

Single Storey

From \$336,300



4 2 2

234.1 sqm

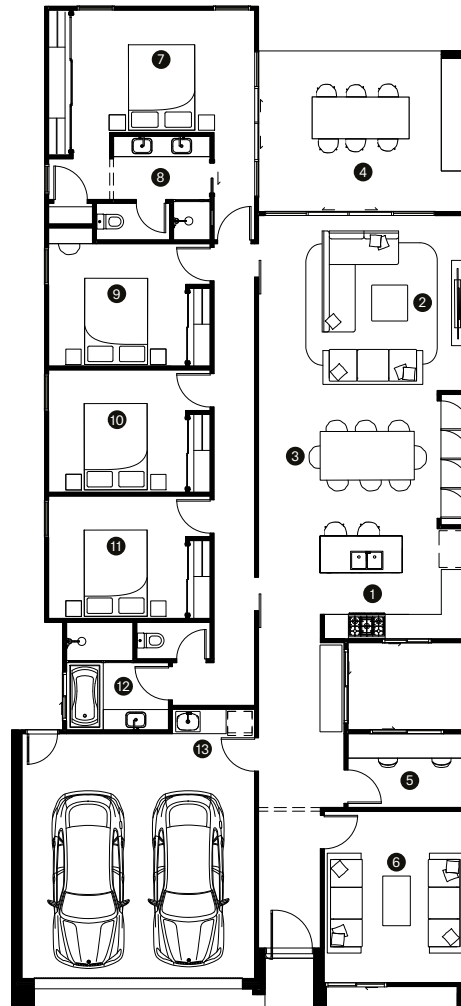


Designed for 12.5m sites this home naturally ventilates and facilitates both open plan living spaces and distinct sleeping and quiet zones. 12C is designed for open plan living with a master suite and study that connects with the outdoors.

Happy Haus

(mm)

1 Kitchen	3650 x 2750
2 Living	3750 x 3700
3 Dining	3750 x 3750
4 Outdoor	5200 x 4000
5 Guest	3250 x 3000
6 Family	4600 x 3600
7 Master	4600 x 3500
8 Ensuite	3500 x 1800
9 Bedroom 2	3050 x 3000
10 Bedroom 3	3050 x 3000
11 Bathroom	3650 x 1800
12 Laundry	2000 x 2000
Block	12m wide block
Minimum width x depth	12.5 x 32m
Dimensions	11.4 x 25.0m
Ground	168.4m ²
Outdoor	26.8m ²
Porch	2.6m ²
Garage	36.3m ²
Total	234.1m ²



Our collection is designed to suit block widths of 10m, 12m and 14m. Each design is named accordingly.

Contact our helpful team to discover more about the difference in our homes and customer experience.

Contact Happy Haus