

10L

Celebrating 10 years of Happy Haus innovation

10L Design • 1F Facade

Single Storey

From \$294,900



3 2 2

207 sqm



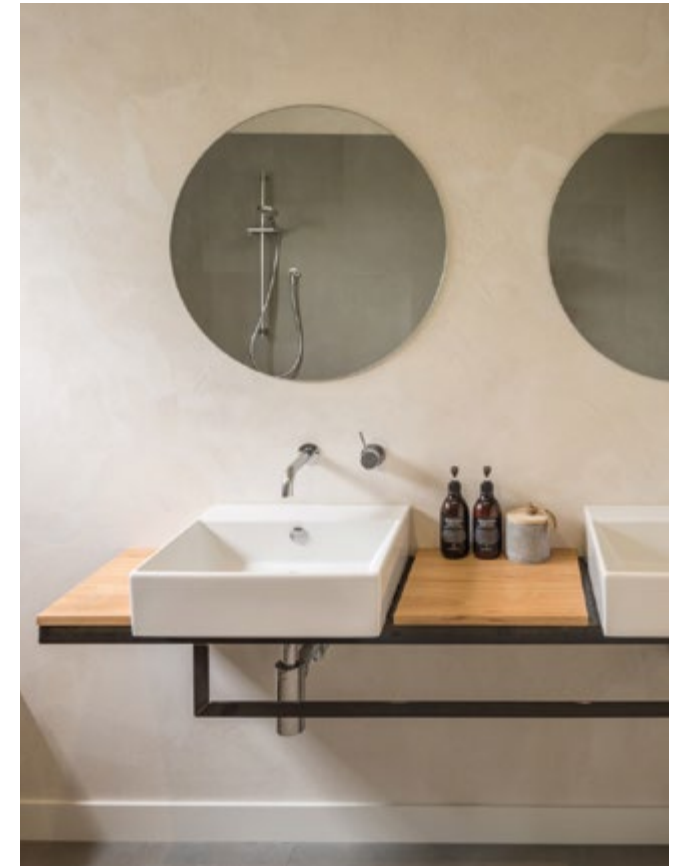
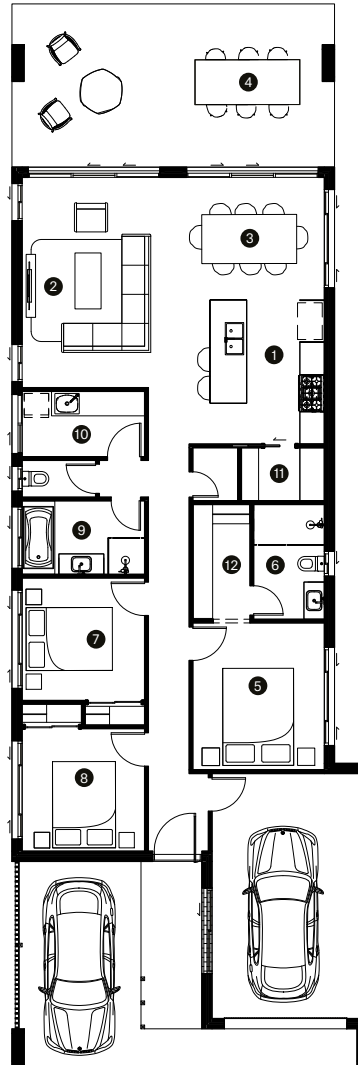
Single-storey living on a 10m block is rare. Our architects have combined 10 years of innovation to achieve optimal living, space and storage on one floor. 10L is designed to connect indoor and outside spaces. For families on-the-go, the garage and carport combination adds to the architectural experience when coming and going.

Happy Haus

happyhaus.com.au

(mm)

1	Kitchen	3550 x 3300
2	Living	5150 x 3090
3	Dining	3300 x 3000
4	Outdoor	7900 x 3000
5	Master	3600 x 3200
6	Ensuite	2800 x 1750
7	Bedroom 2	3000 x 3000
8	Bedroom 3	3000 x 3000
9	Bath	3000 x 1800
10	Laundry	3000 x 1600
11	Pantry	2050 x 1300
12	Walk-in	2800 x 1400
13	Carport	5000 x 3000
Block		10m wide block
Minimum width x depth		10 x 40m
Dimensions		8.7 x 25.0m
Ground		127.3m ²
Outdoor		31.6m ²
Porch		5.7m ²
Garage		26.1m ²
Total		207.0m ²



Our collection is designed to suit block widths of 10m, 12m and 14m. Each design is named accordingly.

Contact our helpful team to discover more about the difference in our homes and customer experience.

[Contact Happy Haus](#)