

10I

Celebrating 10 years of Happy Haus innovation

10I Design • 2I Facade

Double Storey

From \$486,800

🏠 🏡 🏠

4 2.5 2

305.5 sqm



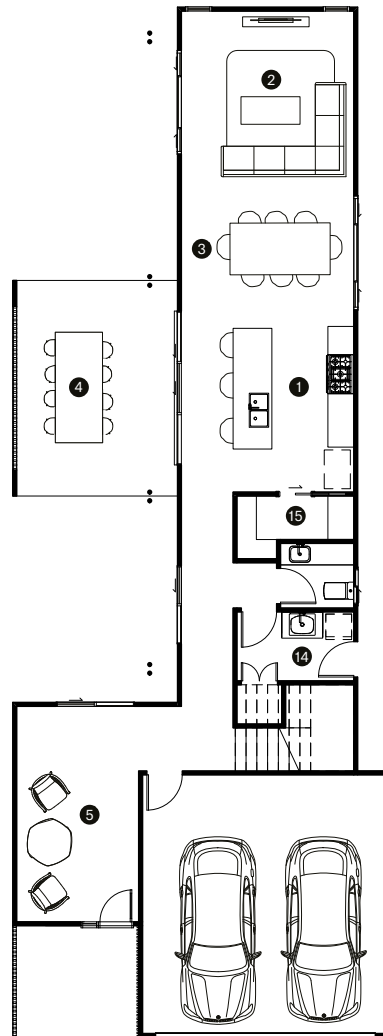
10I is a home that blurs the lines between inside and outdoor spaces, based on a courtyard design topology, not often achievable for 10m sites. Enjoy ample natural light and cross-ventilation across five bedrooms and several multi-purpose spaces in this large family layout. An interconnected kitchen, walk-in pantry laundry maximises the work zone functionality.

Happy Haus

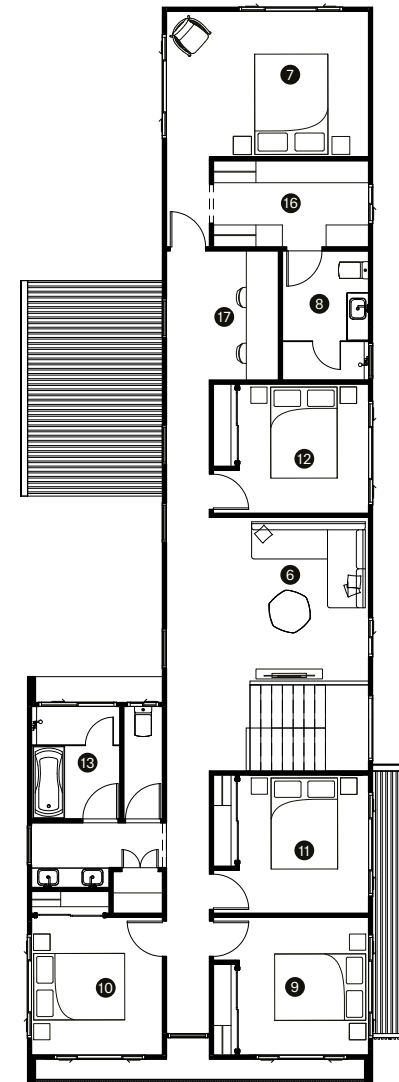
happyhaus.com.au

	(mm)
1 Kitchen	4250 x 3500
2 Living	4000 x 3500
3 Dining	4000 x 3100
4 Outdoor	5000 x 3750
5 Sitting	5000 x 3750
6 Family	3800 x 3700
7 Master	4700 x 3400
8 Ensuite	3000 x 2000
9 Bedroom 2	3200 x 3050
10 Bedroom 3	3200 x 3000
11 Bedroom 4	3200 x 3000
12 Bedroom 5	3000 x 3000
13 Bathroom	4200 x 2050
14 Laundry	2700 x 1600
15 Pantry	2700 x 1450
16 Walk-in	3600 x 2000
17 Study	3000 x 1600
Block	10m wide block
Minimum width x depth	10 x 40m
Dimensions	8.0 x 25.0m
Ground	90.6m ²
First	144.7m ²
Outdoor	26.8m ²
Porch	7.6m ²
Garage	36.3m ²
Total	305.5m ²

Ground



First



Contact our helpful team to discover more about the difference in our homes and customer experience.

Contact Happy Haus

Happy Haus does not give any warranty or make representations, expressed or implied, about the completeness or accuracy of any information in this document or provided in connection with it. This document is not binding on Happy Haus and is not intended to be relied upon. All persons should make their own independent enquiries as to the matters referred to in this document. Ratio Living expressly disclaims any and all liability relating to, or resulting from, the use of, or reliance on, any information contained in this document by any persons. Happy Haus by RM Housing Group QBCC License 1260641. © 2019 Happy Haus