

10G

Celebrating 10 years of Happy Haus innovation

10G Design • 2G Facade

Double Storey

From \$527,640



4 3 2

340.4 sqm



10G features a central double-storey light well that floods both levels of this home with natural light while creating optimal ventilation. Designed for 10m block widths, longevity and flexibility has been considered with the inclusion of a complete third bathroom and adjoining multi-purpose room downstairs. An interconnected kitchen, walk-in pantry laundry maximises the work zone functionality. The master ensuite will feel more like a spa experience, everyday.

happyhaus.com.au

Happy Haus

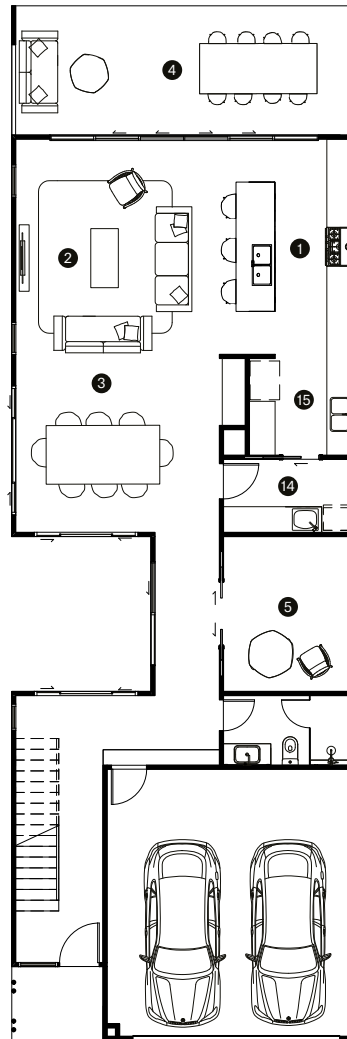
(mm)

| | | |
|----|---------------|-------------|
| 1 | Kitchen | 5100 x 3100 |
| 2 | Living | 5100 x 4750 |
| 3 | Dining | 4750 x 4050 |
| 4 | Outdoor | 4800 x 3000 |
| 5 | Multi-purpose | 3600 x 3000 |
| 6 | Family | 4000 x 3500 |
| 7 | Master | 4650 x 4600 |
| 8 | Ensuite | 3500 x 2250 |
| 9 | Bedroom 2 | 3500 x 3500 |
| 10 | Bedroom 3 | 3500 x 3500 |
| 11 | Bedroom 4 | 3750 x 3400 |
| 12 | Bathroom | 3500 x 2250 |
| 13 | Balcony | 3450 x 900 |
| 14 | Laundry | 3000 x 1700 |
| 15 | Pantry | 2400 x 2250 |
| 16 | Walk-in | 3150 x 2200 |

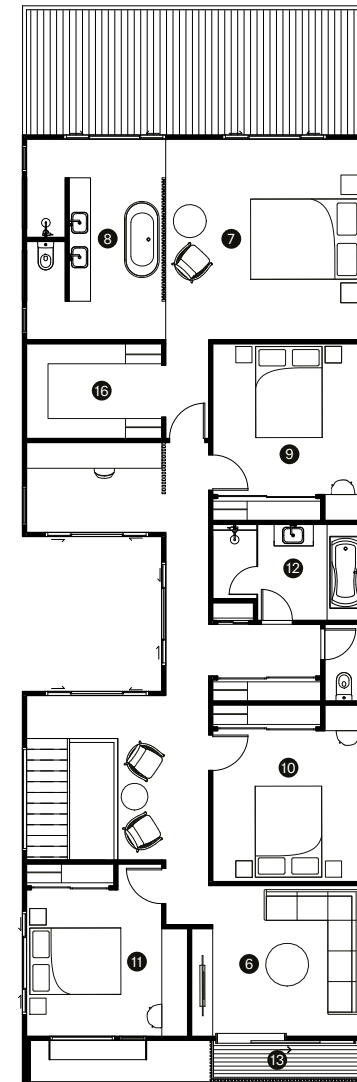
| | |
|-----------------------|----------------|
| Block | 10m wide block |
| Minimum width x depth | 10 x 40m |

| | |
|------------|---------------------|
| Dimensions | 8.0 x 25.0mm |
| Ground | 115.2m ² |
| First | 158.5m ² |
| Outdoor | 24.0m ² |
| Porch | 3.6m ² |
| Garage | 37.5m ² |
| Total | 340.4m ² |

Ground



First



Contact our helpful team to discover more about the difference in our homes and customer experience.

Contact Happy Haus