

10F

Celebrating 10 years of Happy Haus innovation

10F Design • 2F Facade

Double Storey

From \$542,449

🏠 🏡 🏠

4 2.5 2

330.9 sqm



Suited to a 10m block width 10F combines space, functionality and architectural considerations into a large family home, perfect for entertaining. A unique full-width covered outdoor room and sliding doors connect the two main living zones downstairs, complete with mud room. An internal void sits over the dining space, and adjoining chefs kitchen and multi-purpose room. Intelligently zoned spaces and four generous bedrooms are upstairs.

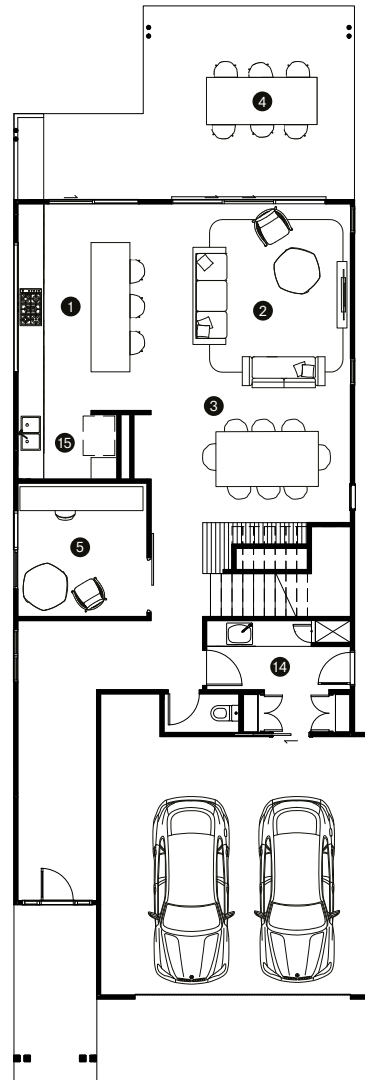
happyhaus.com.au

HappyHaus

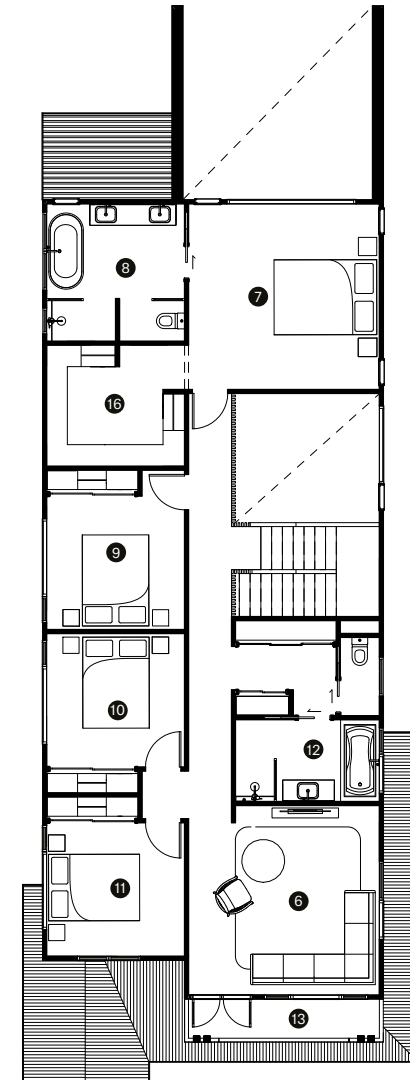


	(mm)
1 Kitchen	6400 x 3100
2 Living	4200 x 4650
3 Dining	4650 x 3200
4 Outdoor	7800 x 4500
5 Multi-purpose	3100 x 3000
6 Family	4450 x 4400
7 Master	4450 x 4300
8 Ensuite	3200 x 3200
9 Bedroom 2	3700 x 3200
10 Bedroom 3	3200 x 3100
11 Bedroom 4	3200 x 3100
12 Bathroom	3350 x 1900
13 Balcony	4450 x 900
14 Laundry	3350 x 1600
15 Pantry	2300 x 1500
16 Walk-in	3200 x 2800
Block	10m wide block
Minimum width x depth	10 x 40m
Dimensions	8.4 x 24.9m
Ground	103.8m ²
First	143.3m ²
Outdoor	28.1m ²
Porch	9.5m ²
Garage	41.6m ²
Total	330.9m ²

Ground



First



Contact our helpful team to discover more about the difference in our homes and customer experience.

Contact Happy Haus

Happy Haus does not give any warranty or make representations, expressed or implied, about the completeness or accuracy of any information in this document or provided in connection with it. This document is not binding on Happy Haus and is not intended to be relied upon. All persons should make their own independent enquiries as to the matters referred to in this document. Ratio Living expressly disclaims any and all liability relating to, or resulting from, the use of, or reliance on, any information contained in this document by any persons. Happy Haus by RM Housing Group QBCC License 1260641. © 2019 Happy Haus