

# 10E

Celebrating 10 years of Happy Haus innovation

10E Design • 2E Facade

Double Storey

From \$441,600



4 2.5 2

270.2 sqm



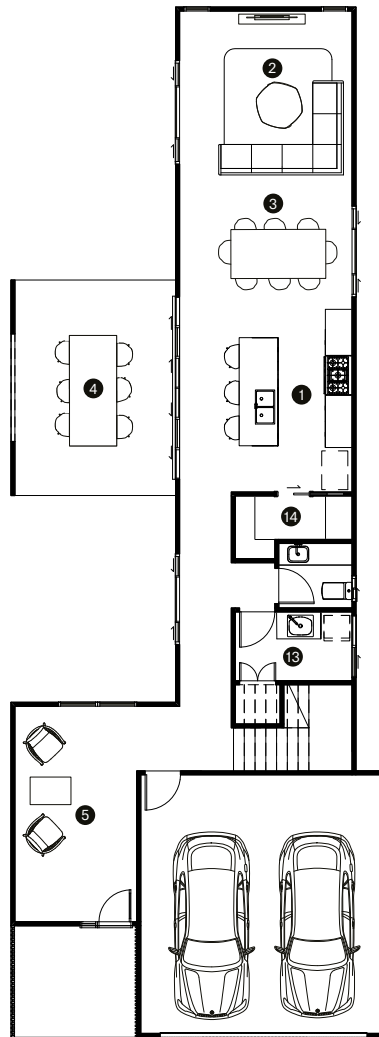
Based on a courtyard design topology, this is a rare solution for a 10m site. 10E blurs the lines between inside and outdoor spaces. Enjoy ample natural light and cross-ventilation across four bedrooms and multi-purpose spaces. An interconnected kitchen, walk-in pantry laundry maximises the work zone functionality.

## Happy Haus

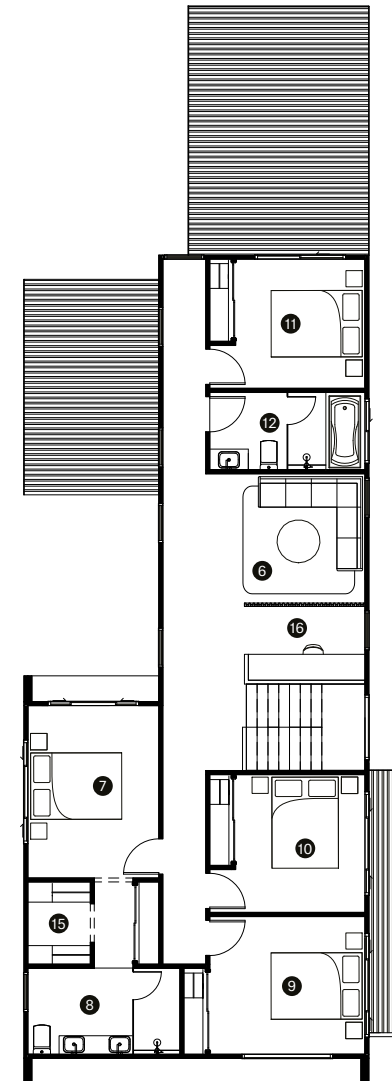
[happyhaus.com.au](http://happyhaus.com.au)

	(mm)
1 Kitchen	4300 x 3000
2 Living	4000 x 4000
3 Dining	2850 x 4000
4 Outdoor	5000 x 3750
5 Vestibule	5000 x 2850
6 Family	3700 x 3150
7 Master	4000 x 3050
8 Ensuite	3550 x 2000
9 Bedroom 2	3600 x 3200
10 Bedroom 3	3200 x 3000
11 Bedroom 4	3000 x 3000
12 Bathroom	3600 x 1800
13 Laundry	2700 x 1600
14 Pantry	2700 x 1450
15 Walk-in	1900 x 1450
16 Study	2850 x 1850
Block	10m wide block
Minimum width x depth	10 x 40m
Dimensions	8.8 x 25.0m
Ground	90.6m <sup>2</sup>
First	116.6m <sup>2</sup>
Outdoor	19.1m <sup>2</sup>
Porch	7.6m <sup>2</sup>
Garage	36.3m <sup>2</sup>
Total	270.2m <sup>2</sup>

Ground



First



Contact our helpful team to discover more about the difference in our homes and customer experience.

[Contact Happy Haus](#)