

10D

Celebrating 10 years of Happy Haus innovation

10D Design • 2D Facade

Double Storey

From \$512,600



5 2.5 2

313.7 sqm



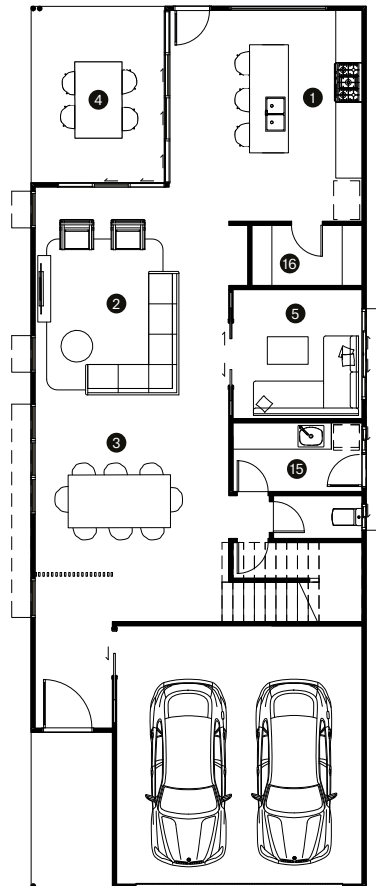
Suited to 10m block the 10D is a five bedroom design that combines space and architectural gesture with a double-height void over the outdoor space overlooked by a generous master suite. Features upstairs rumpus faced the street and is designed to encourage light and ventilation to flow.

Happy Haus

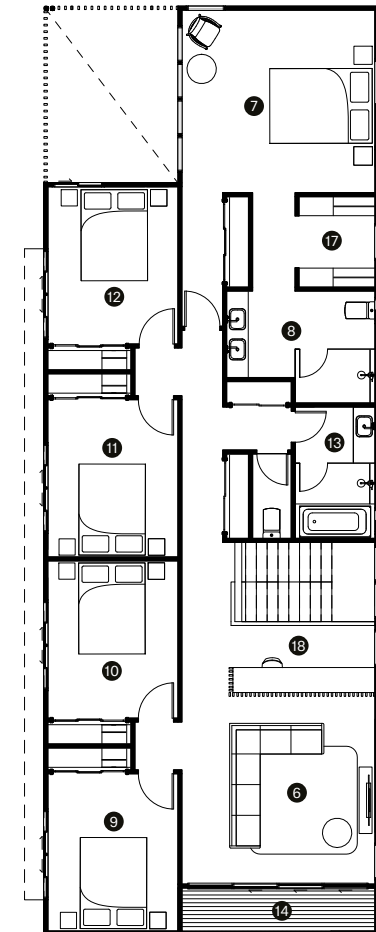
happyhaus.com.au

	(mm)
1 Kitchen	4900 x 3100
2 Living	5450 x 3500
3 Dining	3500 x 3500
4 Outdoor	4100 x 3100
5 Multi-purpose	3000 x 3000
6 Family	4500 x 4450
7 Master	4500 x 4250
8 Ensuite	3450 x 2600
9 Bedroom 2	3650 x 3000
10 Bedroom 3	3650 x 3000
11 Bedroom 4	3650 x 3000
12 Bedroom 5	3650 x 3000
13 Bathroom	3050 x 1850
14 Balcony	3050 x 1850
15 Laundry	3000 x 1600
16 Pantry	2550 x 1400
17 Walk-in	2100 x 1750
18 Study	3300 x 1550
Block	10m wide block
Minimum width x depth	10 x 40m
Dimensions	7.7 x 21.5m
Ground	103.0m ²
First	149.7m ²
Outdoor	12.8m ²
Porch	6.8m ²
Garage	36.3m ²
Total	313.7m ²

Ground



First



Contact our helpful team to discover more about the difference in our homes and customer experience.

Contact Happy Haus