

10B

Celebrating 10 years of Happy Haus innovation

10B Design • 2Q Facade

Double Storey

From \$523,500



4 3 2

332.7 sqm



A Happy Haus is beautiful yet practical. It is a home that engages with its surrounds, and maximises the ability to enjoy the benefits of life in the subtropics. While on the inside, it is complete with stunning interior design and carefully considered luxury standard inclusions.

Happy Haus

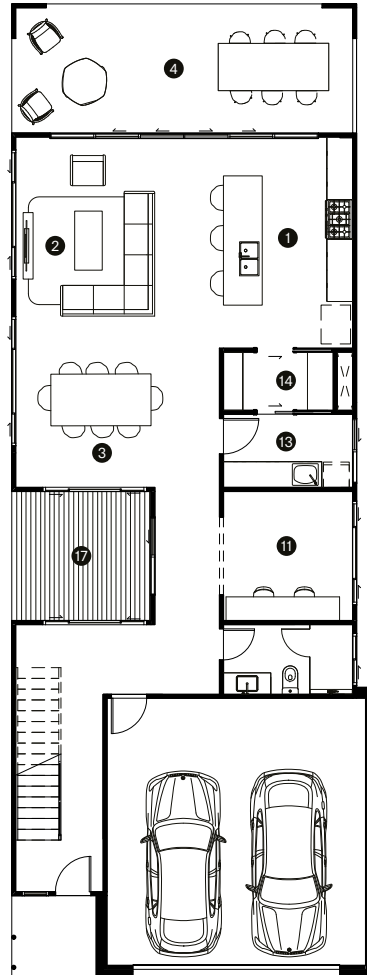
(mm)

1	Kitchen	4900 x 3100
2	Living	4500 x 3250
3	Dining	3600 x 3250
4	Outdoor	7800 x 2900
5	Family	4500 x 3100
6	Master	4700 x 4200
7	Ensuite	3500 x 3500
8	Bedroom 2	3500 x 3500
9	Bedroom 3	3500 x 3500
10	Bedroom 4	3500 x 3000
11	Office	3000 x 3000
12	Bathroom	4100 x 3050
13	Laundry	3000 x 1700
14	Pantry	2550 x 1350
15	Walk-in	3600 x 2000
16	Study	3400 x 2000
17	Courtyard	3200 x 3000

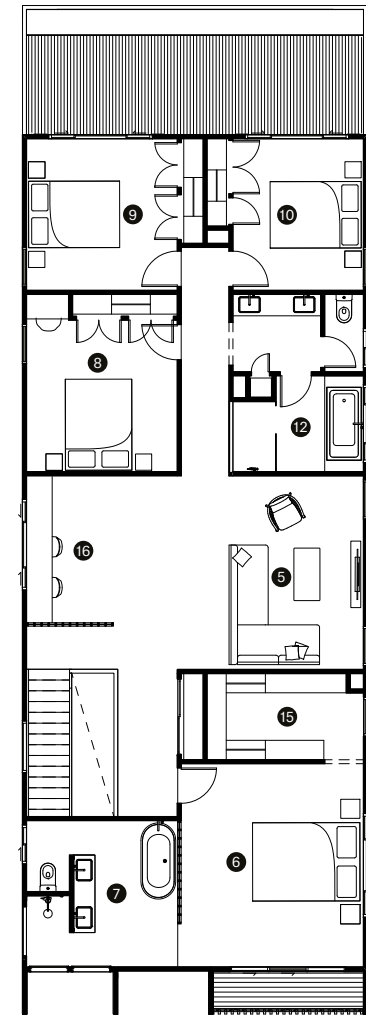
Block	10m wide block
Minimum width x depth	10 x 40m

Dimensions	8.5 x 22.6m
Ground	104.4m ²
First	155.2m ²
Outdoor	24.0m ²
Porch	3.6m ²
Garage	3.7m ²
Total	332.7m ²

Ground



First



Contact our helpful team to discover more about the difference in our homes and customer experience.

Contact Happy Haus